



Apt 51 Ranmoor View, 410 Fulwood Road, Fulwood S10 3GG

Saxton Mee

Lettings



## Apt 51 Ranmoor View

410 Fulwood Road

Per Calendar Month

**£950 Per Calendar**

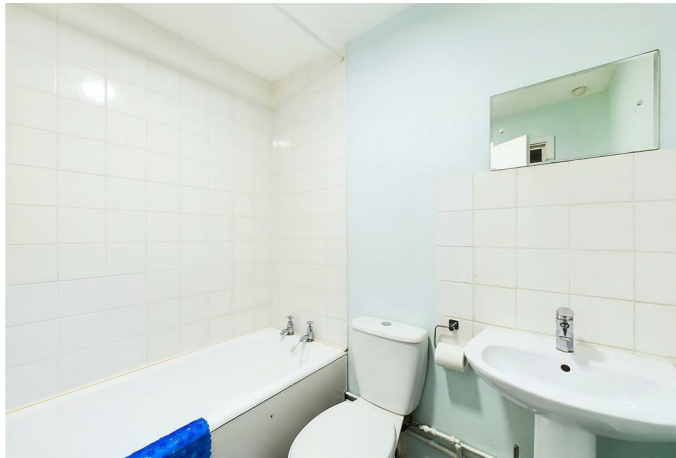
Situated in the heart of Ranmoor is this first floor, two double bedroom apartment. Ideal for the professional couple with its close proximity to town, the hospitals and universities.

The property briefly comprises of; Newly fitted fitchen with appliances, large lounge/dining, master double bedroom with fitted wardrobes, double bedroom two and bathroom with three piece white suite with shower over. Outside there is on site parking and communal gardens.

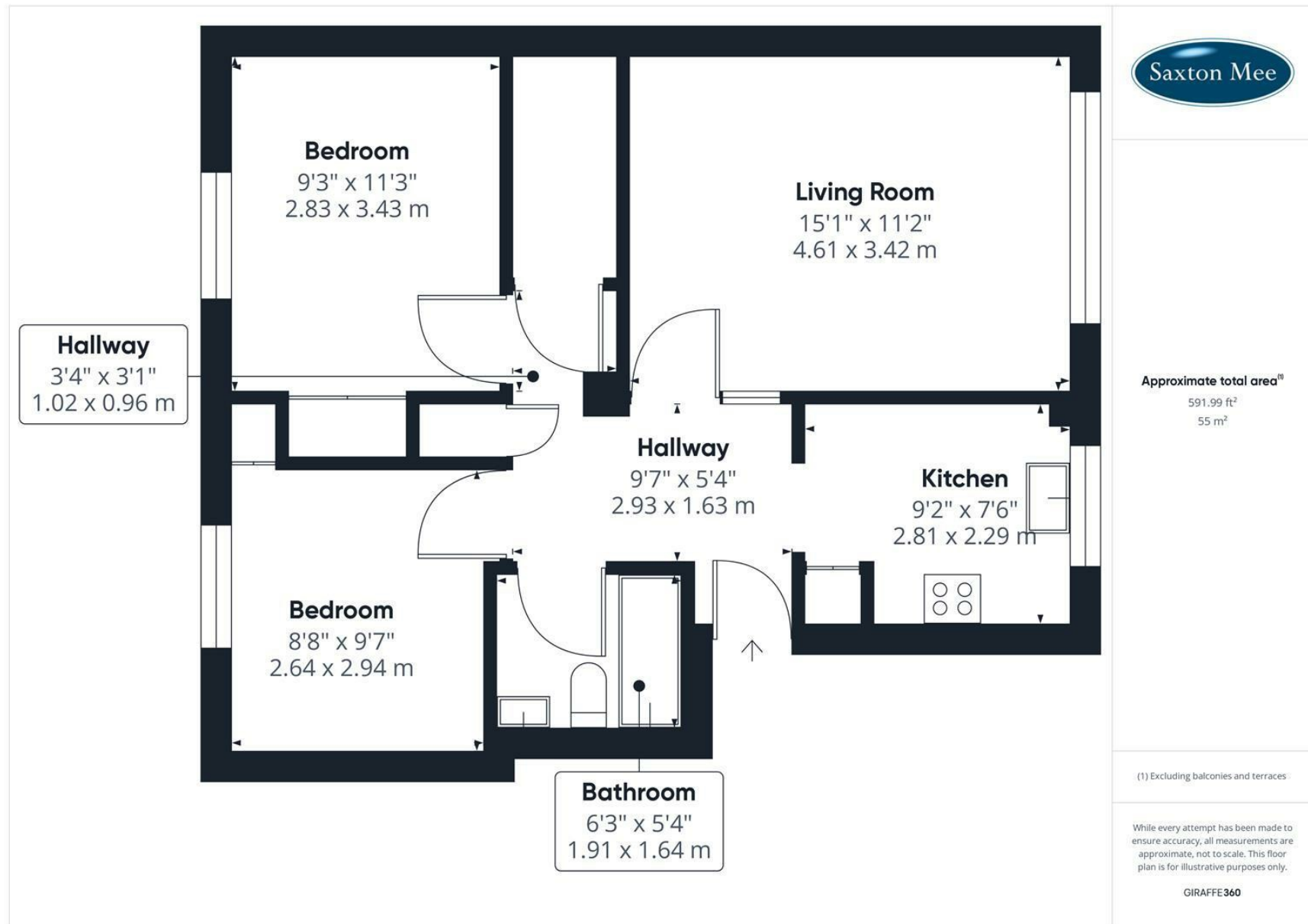
FURNISHED 6-12 MONTH TENANCY. Restrictions:  
No smokers or pets. Energy Efficiency Rating C  
Council Tax Band B











While we endeavour to make our sales particulars fair, accurate and reliable, they are only a general guide to the property and, accordingly, if there is any point, which is of particular importance to you, please contact the relevant office. The Agents have not tested any apparatus, equipment, fittings or services and so cannot verify they are in working order. The buyer is advised to obtain verification. Please note all the measurement details are approximate and should not be relied upon as exact. All plans, floor plans and maps are for guidance purposes only and are not to scale. Under no circumstances should they be relied upon as exact or for use in planning carpets and other such fixtures, fittings or furnishings. YOUR HOME IS AT RISK IF YOU DO NOT KEEP UP REPAYMENTS ON A MORTGAGE OR OTHER LOAN SECURED ON IT. 'A Life Assurance policy may be requested.' 'Written Quotations of credit terms available on request.'

**Banner Cross**  
T: 0114 268 3241  
E: [bannercross@saxtonmee.co.uk](mailto:bannercross@saxtonmee.co.uk)  
[www.saxtonmee.co.uk](http://www.saxtonmee.co.uk)

**Hathersage**  
T: 01433 650009  
E: [hathersage@saxtonmee.co.uk](mailto:hathersage@saxtonmee.co.uk)

**Bakewell**  
T: 01629 815307  
E: [bakewell@saxtonmee.co.uk](mailto:bakewell@saxtonmee.co.uk)

**Matlock**  
T: 01629 828250  
E: [matlock@saxtonmee.co.uk](mailto:matlock@saxtonmee.co.uk)